



44 George Street | | Ryde | PO33 2EN

£550 Per month



Merriebank
LETTINGS

44 George Street |
Ryde | PO33 2EN
£550 Per month

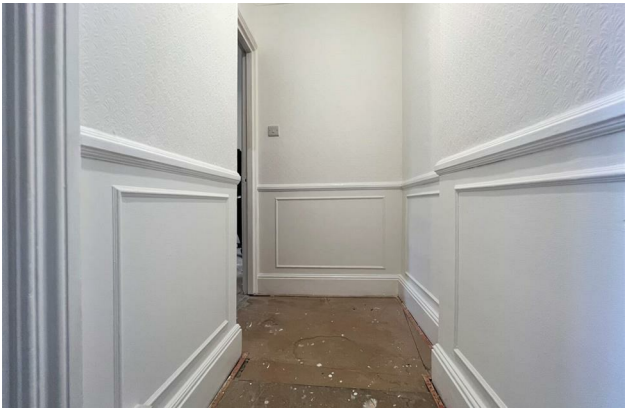
Situated in the heart of Ryde, this one-bedroom flat offers a blend of comfort and convenience. This property is situated on the second floor. The flat features a well-designed layout, comprising a separate kitchen and lounge and bathroom off the main bedroom.

Positioned centrally in Ryde, you will find the high street just behind, offering a variety of shops and amenities. The seafront is merely a short stroll down the hill, allowing you to enjoy the beautiful coastal scenery and fresh sea air. Additionally, the bus and train stations are conveniently close, providing excellent transport links to the mainland and beyond.

For those with vehicles, on-street residents parking is available, with permits easily obtainable from the local council. With its prime location and charming features, this flat is a wonderful opportunity for anyone looking to embrace the Ryde experience.

- 1 bedroom flat, 2nd floor
- Central Ryde location
- Separate kitchen and lounge
- Near bus and train stations
- Seaviews from the lounge
- High street just behind
- On-street residents parking
- Mainland links nearby

Council Tax Band A | EPC Rating E



Energy Efficiency Rating

	Current	Potential
Very energy efficient - lower running costs		
(92 plus) A		
(81-91) B		
(69-80) C		
(55-68) D		
(39-54) E	51	
(21-38) F		
(1-20) G		
Not energy efficient - higher running costs		
England & Wales	EU Directive 2002/91/EC	